

# Highway Improvement Programme Review

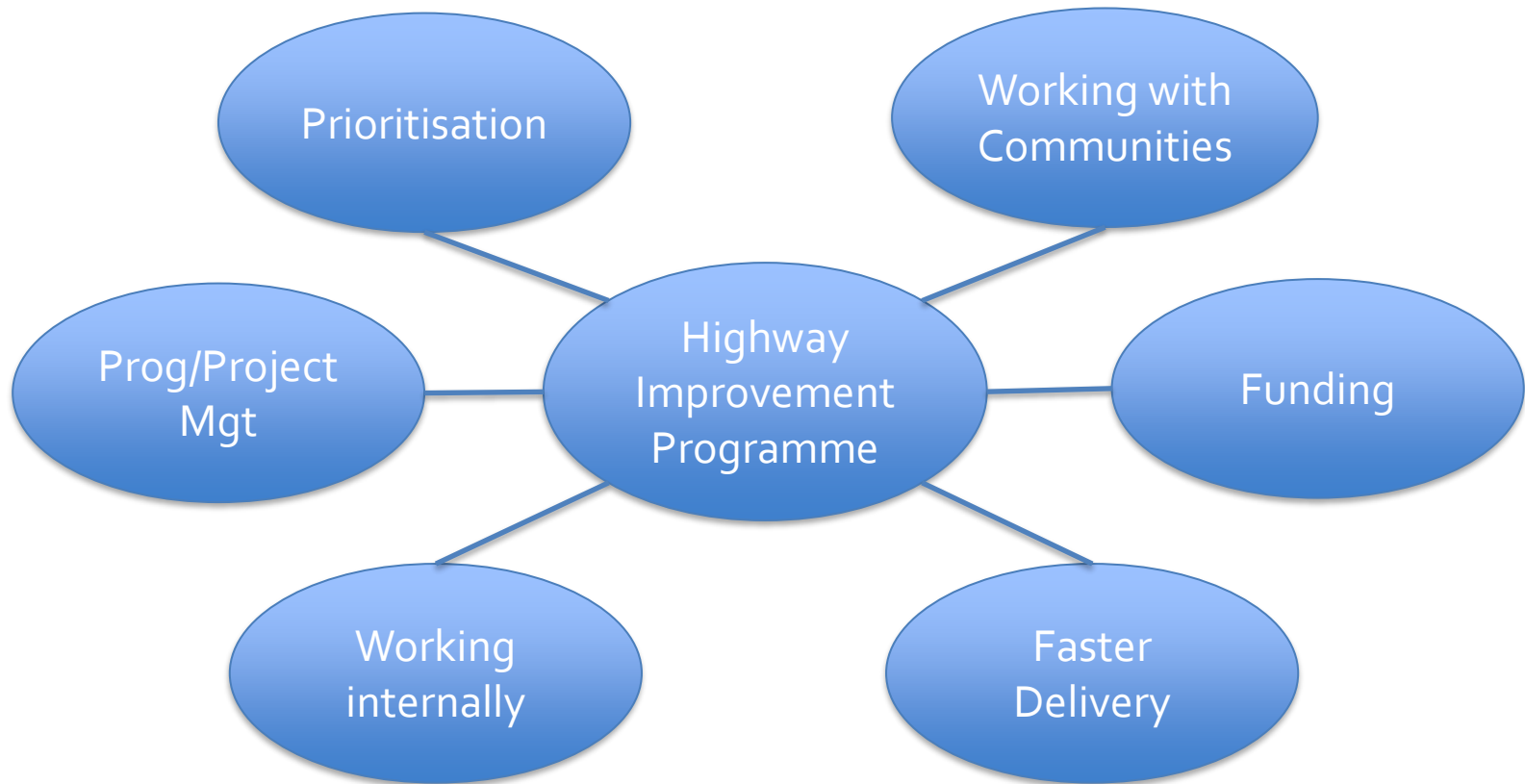
**Charlotte Weller**

Service Improvement Lead,  
Local Highway Operations  
3 March 2022

# What are we covering today?

- What the review of the Highways Improvement Programme is examining
- How schemes in the programme are currently identified, assessed and delivered
- Emerging recommendations from the review
- Your feedback

# Scope of the Review



# How schemes are identified

- The Highways Improvement Programme is made up of a variety of thematic programmes
  - Community Highway Schemes,
  - Local Transport Improvements,
  - Strategic Transport Improvements,
  - Schemes arising from development,
  - Parking schemes,
  - Etc.

# How schemes are assessed and prioritised

- Strategic Transport Improvements Programme Assessment
- Local Highway Improvement Priority Assessment
- Technical assessments – PV<sup>2</sup> etc
- Funding driven – Active Travel, specific bid criteria, funding timescales
- Service specific assessments – Public Rights of Way

# How schemes are delivered

## Year Zero

- Draft programme developed by September
- Procurement runs September – April
- Draft Programme approved January/Feb

## Year One

- Schemes designed, safety audits completed, public consultation undertaken

## Year Two

- Works completed on the ground

# Three areas of focus for CHESC

## Prioritisation

Draft Assessment Framework for all schemes in the Highways Improvement Programme

## Working with Communities

Suggested changes in the way communities and individuals can apply for or deliver schemes on the highway

## Faster Delivery

Suggested changes to the way smaller scale schemes are delivered on the highway by WSCC

# Prioritisation – Aims

## Develop a new Assessment Framework that:

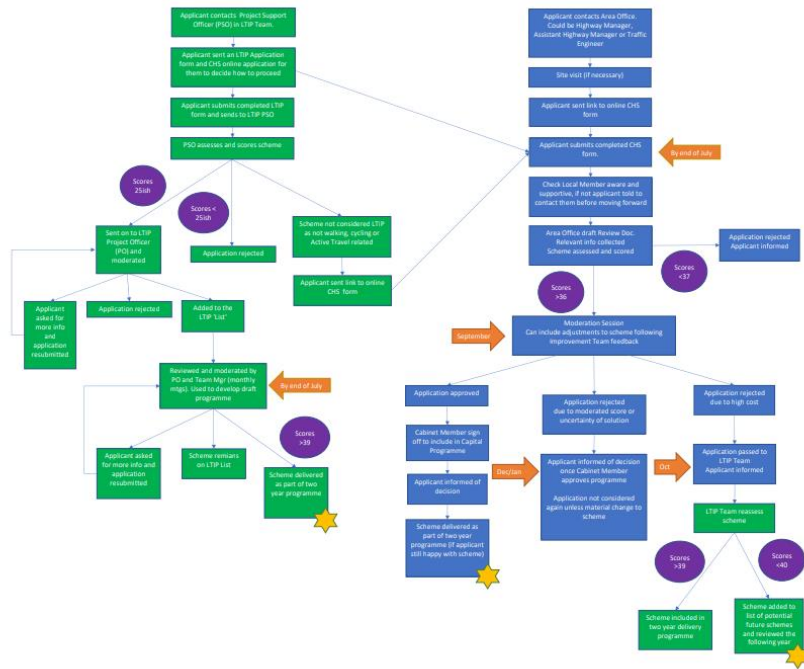
- Enables early identification of schemes that are not feasible
- Ensures schemes aligning with National, Corporate and Local priorities are prioritised
- Will ensure investment is made in the schemes delivering the greatest benefits
- Can be used for all schemes in the Highway Improvement Programme
- Will enable fair comparison across thematic programmes



# Assessment Framework Themes



# Working with Communities - Aims



- Simplify the process
- Provide clearer information to the public
- Keep people better informed

# Working with Communities – emerging recommendations

- One way of applying for a scheme
- No need for the public to understand WSCC thematic programmes
- Involve engineering expertise earlier in the process
- Provide options for delivery relative to the type of scheme being delivered (Faster Delivery)

# Faster Delivery - Aims



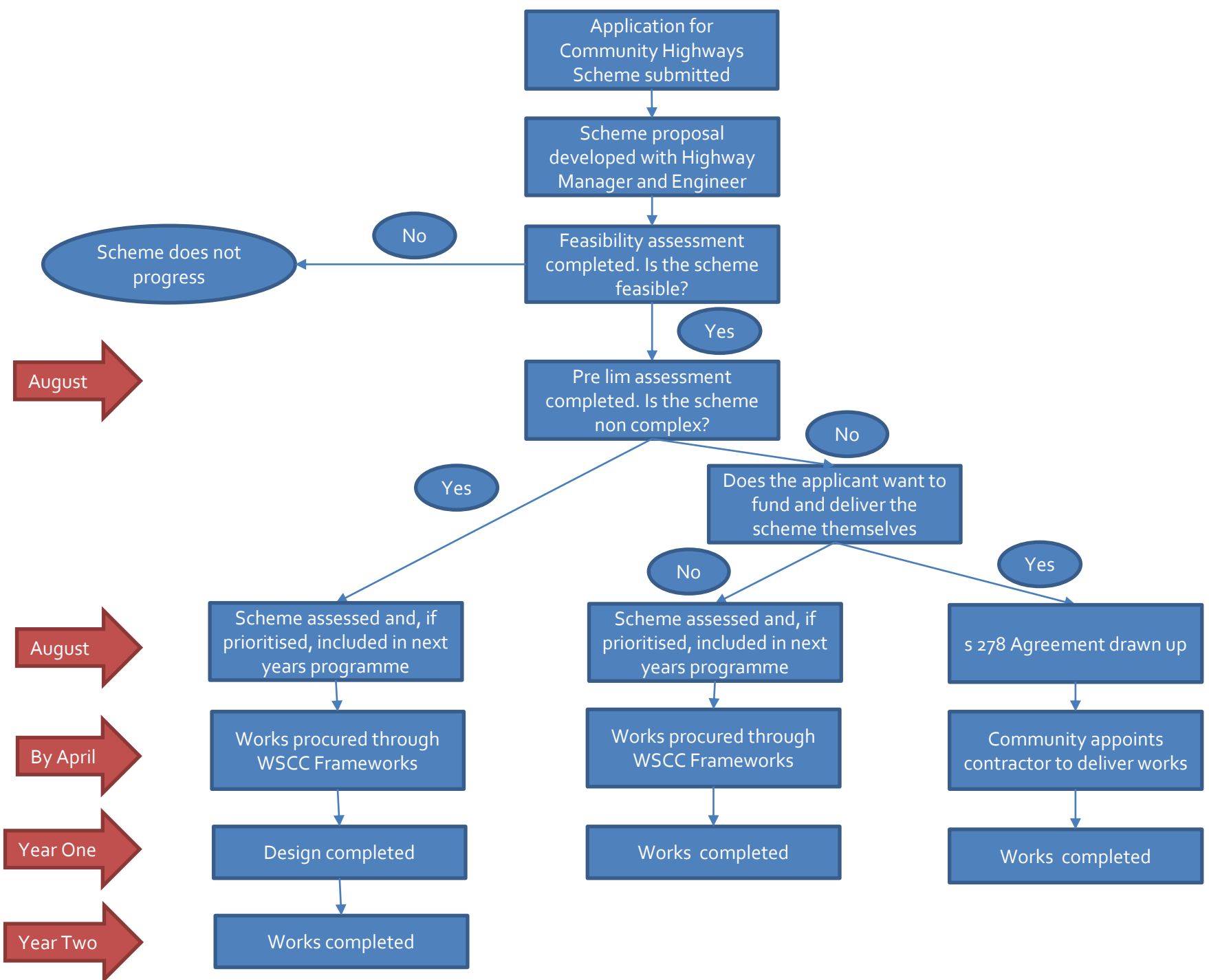
- Develop a method so smaller scale works can be delivered more quickly
- Develop a way in which Communities can deliver their own works

# Faster Delivery – emerging recommendations (1)

- Schemes requested by Communities to be defined as 'simple' or 'complex'.
- Complex schemes will take two years to complete but simple schemes can be delivered in one year.
- Simple schemes will have to meet a key set of criteria. For example:
  - Land in WSCC ownership/full control
  - Cost of scheme <£25,000
  - No requirement for a Road Safety Audit
  - Are not part of a wider programme of works

# Faster Delivery – emerging recommendations (2)

- If a Community can fully fund a simple scheme and is set up to deliver the works themselves, WSCC will enable this
- Strong applications could be programmed into future years to avoid the need for people to re apply if their scheme is not prioritised one year.



Application for Community Highways Scheme submitted

Scheme proposal developed with Highway Manager and Engineer

Feasibility assessment completed. Is the scheme feasible?

Scheme does not progress

No

Yes

Pre lim assessment completed. Is the scheme non complex?

No

Yes

Does the applicant want to fund and deliver the scheme themselves

No

Yes

Scheme assessed and, if prioritised, included in next years programme

Scheme assessed and, if prioritised, included in next years programme

s 278 Agreement drawn up

Works procured through WSCC Frameworks

Works procured through WSCC Frameworks

Community appoints contractor to deliver works

Design completed

Works completed

Works completed

Works completed

August

August

By April

Year One

Year Two

# Faster Delivery - implementation

- Both options for simple scheme delivery will be introduced gradually and resourcing reassessed after first two years.
- Contractual arrangements with WSCC Frameworks to be finalised
- Legal Agreements to allow third parties to complete work on the highway to be finalised
- Schemes must be deemed feasible for WSCC to allow them to progress
- 2023/24 start



# Your thoughts, views and questions on....

- The suggested themes included in the draft Assessment Framework.
- The use of the Assessment Framework to prioritise work across the Highway Improvement Programme.
- The use of the Assessment Framework to review historic s106 agreements and associated schemes.
- Creating a single point of entry to apply for a capital improvement scheme for Communities.
- The options for delivery of smaller scale, simple schemes.

# Thank you